

The Long-awaited - *and Revised* - IDAHO NATIVE PLANT SOCIETY TRIP to *Steens Mountain - August 7 - 8, 2004!*

Our tour of Steens Mountain, Oregon has been preempted by a "Rim Run" on Saturday, August 7, which will close the roads to vehicular traffic and likely create a shortage of accommodations in Frenchglen. Join **DR. KARL HOLTE** for a fun alternate tour – a visit to *Hart Mountain National Antelope Refuge* ON SATURDAY and *Steens Mountain* ON SUNDAY, with a family-style DINNER AT *Hotel Diamond* SATURDAY EVENING. See the maps on the reverse side of this flyer for location proximities.



Hart Mountain

Hart Mountain is essentially a mirror image of Steens Mountain. Whereas Steens Mountain uplifted with the gradual slope facing west (moist side), Hart uplifted with its gradual slope to the east (dry side). Highway 205 traverses the valley between these uplifts. A visit to each will provide an interesting comparison of the different vegetation zones and the relative abundance of plants on the wet and dry slopes, as well as many other ecological and geological aspects.

Friday, August 6 – Check in at the Malheur Field Station for friendly and affordable accommodations, or pre-arrange your stay at other facilities, such as in Frenchglen (38 miles south), Burns (~ 1 hour), or campsites at Hart



Malheur Field Station

Mountain (~ 3 hours). **Reservations must be made in advance** at the Field Station; phone 541-493-2629 **no later than July 28**. A deposit is required, which must be mailed and received prior to the event. Options include family-style mobile homes, or kitchenettes, ranging in price from about \$20-\$25 per night, per person. Other options may also be available; inquire by phone or email at mfs@oregontrail.net.

Saturday, August 7 – We will meet in **FRENCHGLEN AT 7:00 AM** (Pacific Daylight Time, 8:00 Mountain Daylight Time), and carpool to Hart Mountain Antelope Refuge (approx. 70 miles) to Headquarters. If your plans include camping at Hart Mountain, meet at Hart Mountain Headquarters (see map) at 9:00 am (Pacific, 10:00 Mountain). After visiting the information center, we will proceed upward to the rim of Hart Mountain, stopping along the way to look at plants and talk about vegetation zones – and we may catch a glimpse of the 2000+ antelope on this refuge mountain. At the rim escarpment we can overlook a lush valley with lakes which are oftentimes perennial because clouds rising up the west side of the mountain drop enough precipitation there to form lakes during times of abundant rainfall. Although recent drought years have created a drier situation than is typical, we are sure to find amazing views and provocative perspectives. We may drive down to some of those lakes to see the vegetation on the west side of the mountain. We will leave Headquarters at 4:00 for dinner at Hotel Diamond by 7:00 (Pacific Daylight Time).

Saturday evening, August 7 – At the charming and rustic **HOTEL DIAMOND** (~ 30 minutes northeast of Frenchglen), a tantalizing home-cooked meal with gourmet overtones awaits each of us for the modest price of \$12 per person. **Reserve your place** at this memorable table by specifying this dinner option when placing your field trip reservation.



Hotel Diamond

Sunday, August 8 – We will meet in **FRENCHGLEN AT 8:00 AM** (Pacific Daylight Time, 9:00 Mountain Daylight Time), carpool, and progress eastward across the southern tip of Malheur Refuge, which is basically a marshland. We may stop at P Ranch, as well as several good birding and plant areas along the way. On our journey up to the east rim we will see vegetation types ranging from desert sagebrush habitat to rare closed canopies of Western juniper, to high alpine flower

meadows and grasslands. Our stops may include Lily Lake, with its hydric succession circles, Jackman Park, Naughty Girl Meadow (interesting history), Kiger Gorge, Wildhorse tarn, and many breathtaking vistas. Looking down from Steens' rim eastward, we will see the Alvord Desert, which receives only an annual average of 6" of precipitation, because it is in the rain shadow of the Steens. Sunday evening we return to Frenchglen.

To participate in this trip, **YOU MUST REGISTER BEFORE AUGUST 3**.

To register, contact:

CYNDI COULTER of Pahove Chapter: phone (208) 287-2732 or email: ccoulter@idfg.state.id.us **before July 29**, **OR:**

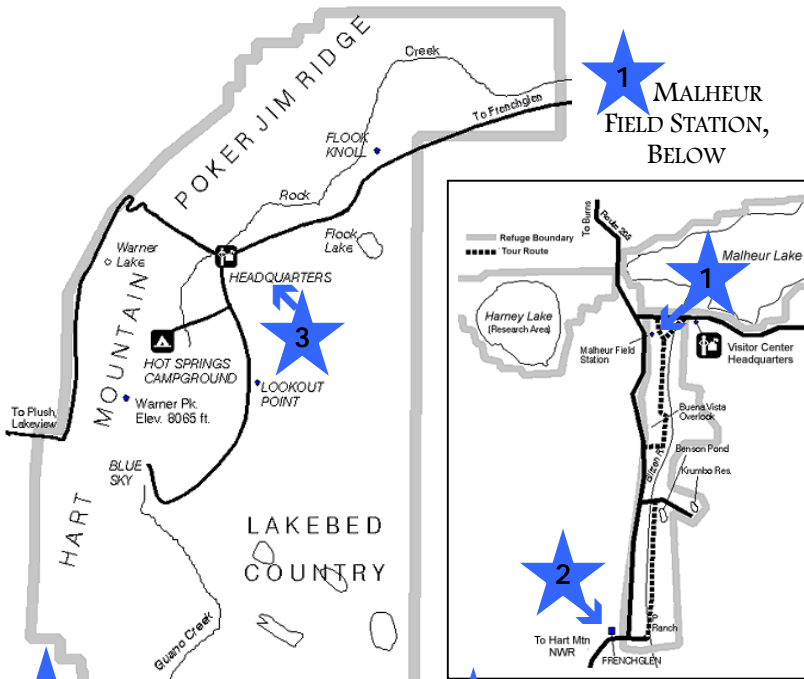
KARL HOLTE of Sah-Wah-Be Chapter, trip leader:
Karl E. Holte, PhD, Emeritus Professor of Botany, Idaho State University,
1506 N. Mink Creek Road, Pocatello, ID 83204, (208) 232-6563 or 241-8358 or email:
ardysholte@cableone.net **between July 26 and August 3, 2004.**

FEES APPLY: \$4.00 PER PERSON FOR STEENS PERMIT; WE MAY RENT A VAN TO TOUR THE STEENS LOOP - ADD \$6.00 ADDITIONAL PER PERSON.

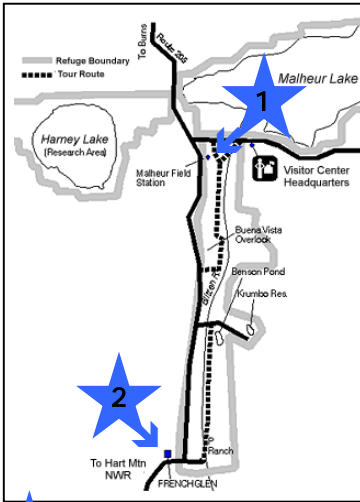


Steens Mountain

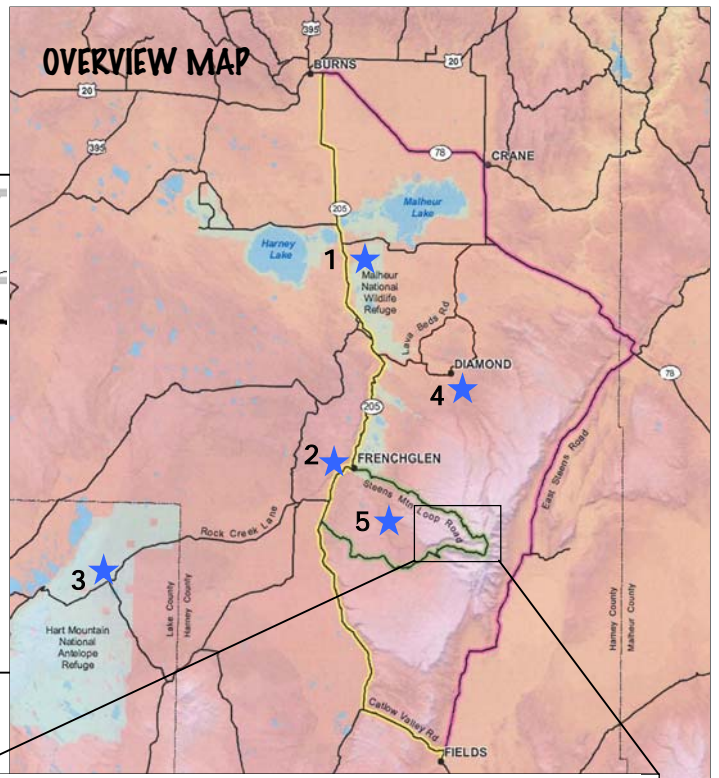
Visit these informative websites: www.or.blm.gov/steens/index.htm http://pacific.fws.gov/refuges/field/OR_hartmntn.htm
www.malheurfieldstation.org/ www.central-oregon.com/hoteldiamond/ www.harneycounty.com/



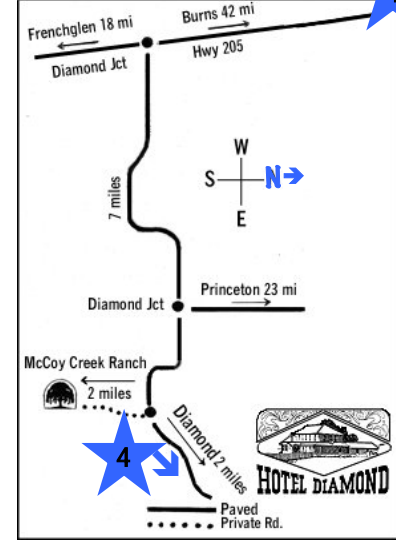
1 MALHEUR FIELD STATION, BELOW



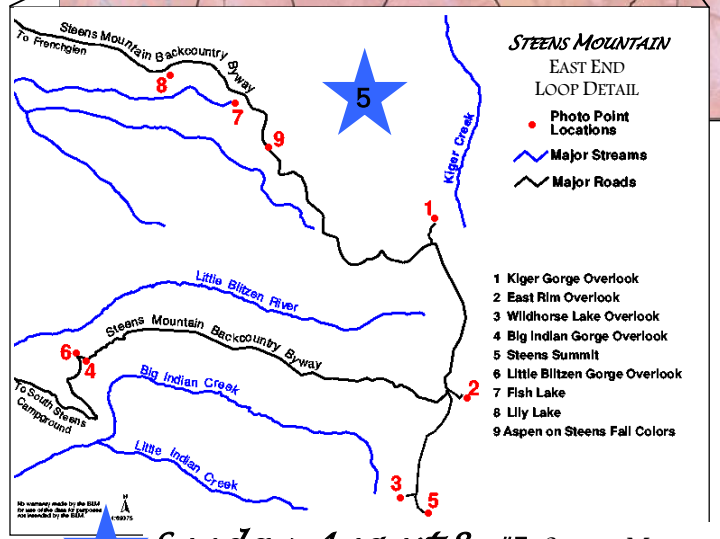
2 FRENCHGLEN group meeting location, ABOVE



3 HART MOUNTAIN, ABOVE
Saturday, August 7
HOTEL DIAMOND, BELOW



REMINDER:
YOU MUST RESERVE YOUR OWN ACCOMMODATIONS IN THE AREA
THE STEENS MOUNTAIN FIELD TRIP IS LIMITED TO 30 PARTICIPANTS!



STEENS MOUNTAIN EAST END LOOP DETAIL
• Photo Point Locations
~ Major Streams
~ Major Roads

- 1 Kiger Gorge Overlook
- 2 East Rim Overlook
- 3 Wildhorse Lake Overlook
- 4 Big Indian Gorge Overlook
- 5 Steens Summit
- 6 Little Blitzen Gorge Overlook
- 7 Fish Lake
- 8 Lily Lake
- 9 Aspen on Steens Fall Colors

5 *Sunday, August 8* #5: STEENS MOUNTAIN

IDAHO NATIVE PLANT SOCIETY
P. O. Box 9451
Boise, ID 83707
www.IDAHONATIVEPLANTS.ORG

Summer botanizing 2004 -
High atop Steens Mountain AND at Hart Mountain National Antelope Refuge!

SPONSORED BY
PAHOVE AND SAH-WAH-BE CHAPTERS

