

INPS ANNUAL MEETING IN CHALLIS, IDAHO

Friday through Sunday, July 8-10, 2005



Physaria didymocarpa
IDCDC

CHALLIS is located in the Lemhi Valley where the Lewis & Clark party first entered present-day Idaho after crossing the Continental Divide. Challis is one of the most arid places in Idaho and has an active geologic history. These factors may contribute to the numerous endemic plant species in the Challis area, also known as the *CHALLIS ENDEMIC*S.

We will explore the Challis area and hopefully encounter the following Challis endemics: Challis crazyweed (*Oxytropis besseyi salmonensis*), Challis milkvetch (*Astragalus amblytropis*), Lemhi milkvetch (*Astragalus aquilonius*), Salmon twin bladderpod (*Physaria didymocarpa* var. *lyrata*), wavy-leaf thelypody (*Thelypodium repandum*), and Welsh's buckwheat (*Eriogonum capistratum* var. *welshii*).



Thelypodium repandum
IDCDC

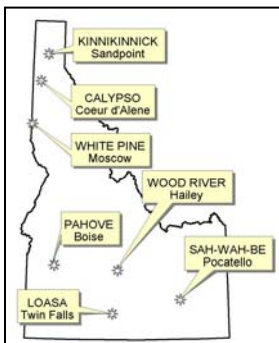
Here is the itinerary for the weekend:

- ◆ Friday, July 8, evening—Meet at Challis Hot Springs for botanizing and camping.
- ◆ Saturday, July 9, 8AM—Meet at Challis Hot Springs for a field trip to Malm Gulch, where we will visit a petrified forest of giant Sequoias and look for Challis endemics. Afterward, we may visit additional locations that may include Spar Canyon, Pahsimeroi, and various desert gulches.
- ◆ Saturday, JULY 9, 6PM or upon return from the field trip—There will be a potluck barbeque just south of the campground at Challis Hot Springs. Bring a barbeque item for yourself and a potluck dish to share!
- ◆ Sunday, July 10, 8AM—Steve Rust will host the 2005 INPS Annual Meeting.
- ◆ Sunday, July 10, 10AM—Wrap up the weekend with one last field trip (TBD).

Note: This itinerary is tentative and additional details will be posted at <http://www.idahonativeplants.org/>.

DIRECTIONS: Take Highway 93 north through Challis to Hot Springs Road and head east-northeast. Challis Hot Springs is located at the end of the road, approximately 4.5 miles.

WHERE TO STAY: Challis Hot Springs features commercial hot springs, tent and RV camping, and a bed and breakfast in a mountain setting close to the Salmon River. We have reserved all 10 tent campsites at a group rate that includes access to the hot springs. For those preferring indoor comforts, the bed and breakfast (includes breakfast and hot soaks) is \$95/night for two. More modestly priced lodging is available nearby in Challis. RV site and bed and breakfast reservations may be made by directly contacting Challis Hot Springs at (208) 879-4442.



PLEASE RSVP by completing the information below **BY JUNE 24, 2005**, and send to:

Beth Colket, IDCDC
Idaho Native Plant Society
P.O. Box 9451
Boise, ID 83707
bcolket at idfg dot idaho dot gov
(208) 287-2799 (w)

INPS Annual Meeting in Challis, ID ◆ July 8-10, 2005

___ # of people attending

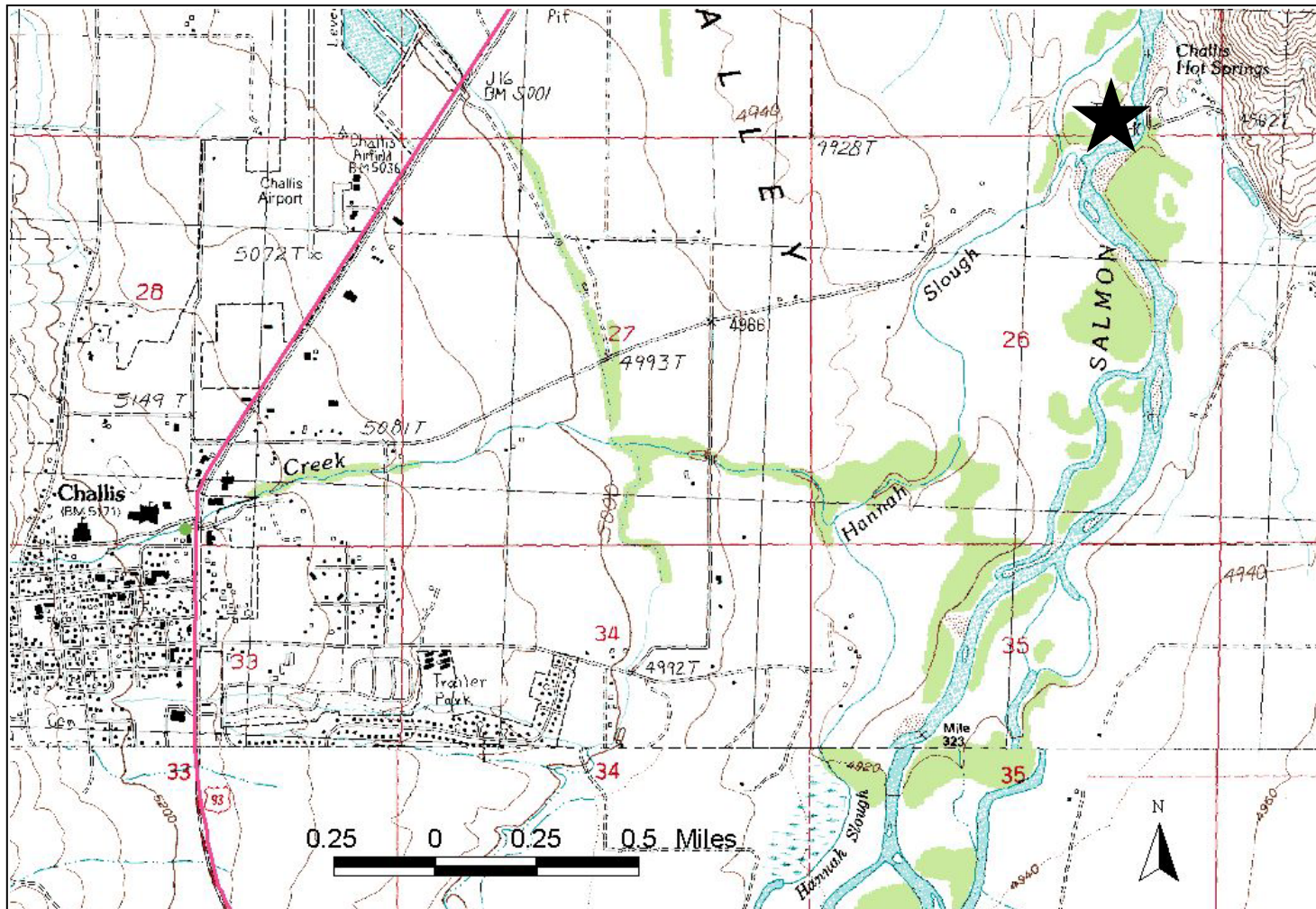
___ # of people who will be tent camping at Challis Hot Springs

Name(s): _____

Address: _____

City: _____ State: _____ Zip code: _____

Telephone: (____) _____ E-mail: _____



*COME JOIN US FOR A WEEKEND OF BOTANIZING
AT THE 2005 INPS ANNUAL MEETING —
HELD THIS YEAR AT CHALLIS HOT SPRINGS!*

IDAHO NATIVE PLANT SOCIETY

P.O. Box 9451
Boise, ID 83707

ADDRESS SERVICE REQUESTED

<p>Non Profit Organization U.S. Postage Paid Boise, ID Permit No. 688</p>
